

Ashtons

5 Ruby Street YO23 1EE

£1,100

2



1



1



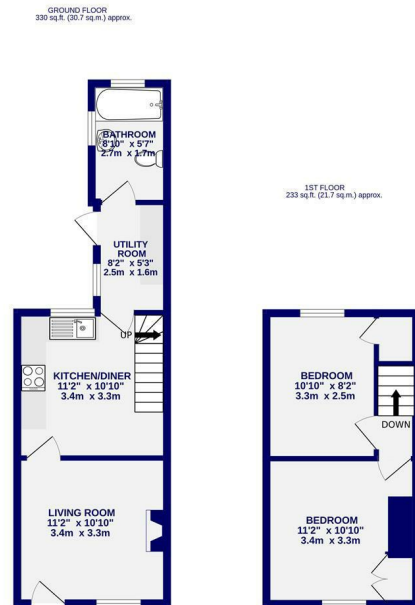
D



This well presented mid terraced house is located in the popular South Bank area; ideally positioned for access to the City centre as well as the many, much acclaimed local amenities Bishopthorpe Road has to offer. The property is offered on an unfurnished and briefly comprises; Living room leading through to a modern fitted kitchen/diner with oven and hob. Utility area with fridge freezer, washing machine and storage cupboards, ground floor bathroom with shower over bath. To the first floor are two double bedrooms. Externally is a rear yard with storage shed. On street parking.

Available Now

Deposit : £1200 / 12 Month Tenancy / Council Tax Band B / EPC Rating D



TOTAL FLOOR AREA: 564 sq ft (52.4 sq m) approx.
We warrant every attempt has been made to ensure the accuracy of the floorplan. Measurements of rooms and any other areas are approximate. It is advised to take the measurements of the rooms and any other areas as a guide only. The floorplan is for information only and should not be used as a basis for any prospective purchase. The various systems and appliances shown have not been tested and are prepared as to their specification.
Made with Metaplan (2025)



Ashtons Lettings



01904 731404



lettings@ashtonsnet.com

